

# BEADS FOR PLASTERING (INSIDE THE BUILDING)

PLASTER THICKNESS

6 to 8 mm (min.)

9 to 12 mm (min.)

## CORNER BEADS

## PVC RANGE

## STOP- & FINISHING BEADS

### GALVANISED OR ALUZINC

### ALUMINIUM

### STAINLESS STEEL 304

### GALVANISED OR ALUZINC

### ALUMINIUM

### STAINLESS STEEL 304

### FOR WINDOW / DOOR FRAMES

<p><b>PERGYPLUS 0132</b></p>			<p><b>RONDO GYP PVC 8207</b></p>	<p><b>GALSTOP 0126</b></p>	<p><b>ALUSTOP 0226</b></p>	<p><b>INOSTOP 0426</b></p>	<p><b>PROFI INTER 8106</b></p>
<p><b>PERCAR 0138 (0,4) / 0139 (0,5)</b></p>	<p><b>PERCAR ALU 0238</b></p>	<p><b>PERCAR INOX 0438</b></p>	<p><b>CORNER BEAD PVC 8066</b></p>	<p><b>GALSTOP 0127</b></p>	<p><b>ALUSTOP 0227</b></p>	<p><b>INOSTOP 0427</b></p>	<p><b>PROFI INTER ECO 8166</b></p>
<p><b>PERFOR 0112</b></p>	<p><b>PERALU 0212</b></p>		<p><b>STOP BEAD PVC 8666</b></p>	<p><b>REGLE 0140 (0,5) / ECO 0144 (0,4)</b></p>	<p><b>REGLALU 0240</b></p>	<p><b>REGLINOX 0440</b></p>	<p><b>PROFI INTER ECO LIPPE 8866</b></p>
			<p><b>DILAT PVC 8506</b></p>			<p><b>DILATINOX 2404</b></p>	
			<p><b>CORNER BEAD PVC "ECO" INTER 8466</b></p>				
<p><b>ANGLEX 0119</b></p>	<p><b>ANGLALU 0219</b></p>	<p><b>ANGLINOX 0419</b></p>	<p><b>REGLE PVC 8031 / 8032</b></p>	<p><b>REGLE 0141</b></p>	<p><b>REGLALU 0241</b></p>	<p><b>REGLINOX 0441</b></p>	<p><b>PROFI MINI 8108</b></p>
<p><b>CORNER 0013</b></p>		<p><b>CORNER INOX 0413</b></p>	<p><b>CORNER BEAD PVC ECO 8406 / 8410</b></p>	<p><b>PLASTOP 0023 / 0123 / 0124</b></p>	<p><b>STOPALU 0224</b></p>	<p><b>STOPINOX 0420</b></p>	<p><b>PROFI MINI LIPPE 8888</b></p>
<p><b>CORNER 0015</b></p>	<p><b>CORNER ALU 0214</b></p>	<p><b>CORNER INOX 0415</b></p>	<p><b>CORNER BEAD PVC 8011</b></p>	<p><b>DILATGAL 2001</b></p>	<p><b>STOPINOX 0421</b></p>	<p><b>APU A11 / MINI 8109</b></p>	
<p><b>CADERFIX 0155</b></p>			<p><b>CORNER BEAD PVC 8010</b></p>	<p><b>GALSTOP 0122</b></p>	<p><b>ALUSTOP 0222</b></p>	<p><b>INOSTOP 0422</b></p>	<p><b>APU A11 + / MINI LIPPE 8138</b></p>
<p><b>CADER RACCORD 0156</b></p>			<p><b>DILAT PVC 8510</b></p>	<p><b>CADERSTOP U 0153</b></p>		<p><b>STOPINOX 0423</b></p>	<p><b>APU A15 / IDEAL 8101</b></p>
<p><b>CADER CLIPS 0157</b></p>			<p><b>STOP BEAD PVC 8610</b></p>	<p><b>CADERSTOP L 0152</b></p>			<p><b>APU A13 / MIDI 8112</b></p>
<p><b>WIDRA IP 0182</b></p>		<p><b>WIDRA IPE 0429</b></p>					<p><b>APU A13+ / MIDI LIPPE 8142</b></p>

# PROFILES FOR INTERNAL PLASTERING

## BEADS AND ACCESSORIES



Ask for our new catalog



info@mdb.eu www.mdbprofil.com  
Quai Vercour, 98 • B-4000 LIEGE - Belgium  
Tel. : 0032 (0)4 / 252 70 35 • Fax : 0032 (0)4 / 252 11 03



www.mdbprofil.com | info@mdb.eu |



## ACCESSORIES FOR INTERNAL PLASTERING



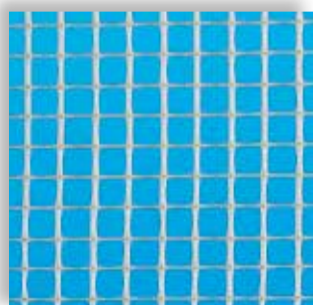
### POUTRECLIPS

**Ref. 1013** - Tool for the fixing of metal lath or gypsum boards on steel structures.



### "MULTI COUP" PINCH

**Ref. 1205** - Cutting pinch for PVC and APU profiles.



**ARMATEX - 4044 → 4047**  
- Fibre mesh rolls (mesh 4 x 4 mm - 75g/sqm) for internal plastering reinforcing.  
Rolls 12,5 - 25 - 50 - 100 cm x 100 m (2400 sqm / Pal.)



### WISS PINCH

**Ref. 1200** - Universal cutting pinch for metal profiles (yellow).



### CHAPNET

Vertex fiber for screed reinforcing  
**Ref. : 4905** - Rolls of 50 m x 1 m (50 sqm)  
**Ref. : 4910** - Rolls of 100 m x 1 m (100 sqm)  
"CSTB" certification  
**145g/sqm**



### LATH PINCH

**Ref. 1206** - Fixing pinch to fix metal lath sheets together (Ner-latt and Grip-latt Plus).



### STUCLOPER

Recycled carton-paper with a PE protection on both sides for the floor protection.  
**350gr/sqm**



### STUCLOPER ECO

Recycled carton-paper with a PE protection on both sides for the floor protection.  
**250gr/sqm**

**Ref. : 1016** - Rolls +/- 0,9 x 55,55 m  
**Ref. : 1017** - Rolls +/- 1,20 x 41,66 m  
=50 sqm/roll

**Ref. : 1012** - Rolls +/- 1,20 x 54,17 m  
=65 sqm/roll

**GUARANTEE:** We guarantee the impeccable quality of the raw materials used in the manufacture of our sections/extrusions for plaster (275 g galvanised Sendzimir, AZ 150 Aluzinc, aluminium, AISI 304 stainless steel and PVC). However, we are unable to guarantee resistance against corrosion for our sections. In fact, the chemical and physical properties of sections on the current market are diverse and come under the liability of their manufacturers. This is why you should always ask the plaster manufacturer about the compatibility of their product with the material of the section to be used. In order to avoid any problem with corrosion, we advise the use of coated aluminium, PVC or AISI 304 stainless steel sections in extreme damp conditions (houses in wooded areas, bathrooms, etc.) or where drying the plaster takes a long time (poor ventilation of the premises or during winter and autumn).

**NB:** - To avoid sporadic rust, do not use galvanised tools or accessories with stainless steel sections.  
- Always store the sections in a dry, sheltered place.

**TECHNICAL ASSISTANCE:** Samples of our sections, technical files or fitting instructions are available on request and free of charge from your distributor, who can also, if necessary, put you in touch with our technical sales representatives.

**NB:** Please ensure that you refer to current documentation which cancels and replaces documents on sections for plasters produced previously (see date on the reverse).

2015 - EN

AVOID PLASTER CRACKING !

### NER-LATT N03.GA 6100 (ALUZINC) / N03.IN 6400 (STAINLESS STEEL AISI 304)

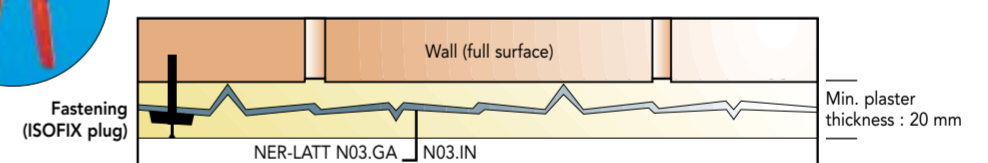
#### Product description

Ner-Latt is a metal lath made of aluzinc steel (AZ150) or stainless steel (AISI 304) with a thickness of 0,3 mm.

Min. plaster thickness : 20 mm (in 2 layers).

Packaging : N03.GA - packs of 15 sheets of 0,6 m x 2,5 m (22,5 sqm)  
N03.IN - packs of 10 sheets of 0,6 m x 2,5 m (15 sqm)

Weight : 1,20 kg/sqm



### GRIP-LATT Plus 6000 (ALUZINC)

#### Product description

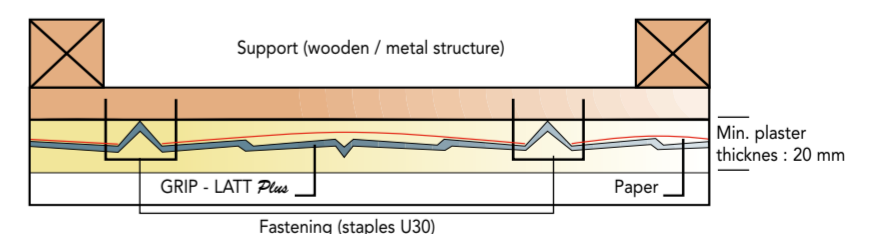
Grip-latt Plus is a metal lath made of aluzinc steel (AZ150) with a thickness of 0,3 mm.

There is a layer of paper in order to prevent the water from the plaster to go on the wooden / metal structure. It's easier for the pulling of the plaster and it also prevents plaster to go through the metal lath during the plastering.

Min. plaster thickness : 20 mm (in 2 layers).

Packaging : packs of 15 sheets of 0,6 m x 2,5 m (22,5 sqm)

Weight : 1,27 kg/sqm



## ADVANTAGES OF METAL LATHING

- STRENGTH** : stable support for an easy "pulling" of the plaster after the projection.
- LIGHTNESS** : easy to handle in the working place (27 kg / pack).
- GRIP** : 6000 ribs / sqm to limit the risk of cracking after the drying of the plaster.
- ECONOMY** : very few superposition of the material when fixing the metal lath on the support.
- EFFICIENCY** : less labour cost, 2<sup>nd</sup> layer can be applied the same day.
- SPEED** : faster plastering and drying.
- RIGIDITY** : lights and other accessories can be fixed in the ceiling when the installation has dried.

## AMAZING FIRE RESISTANCE



The fire resistance certificates (more than 3 hours fire resistance!) are available on request by your local dealer.